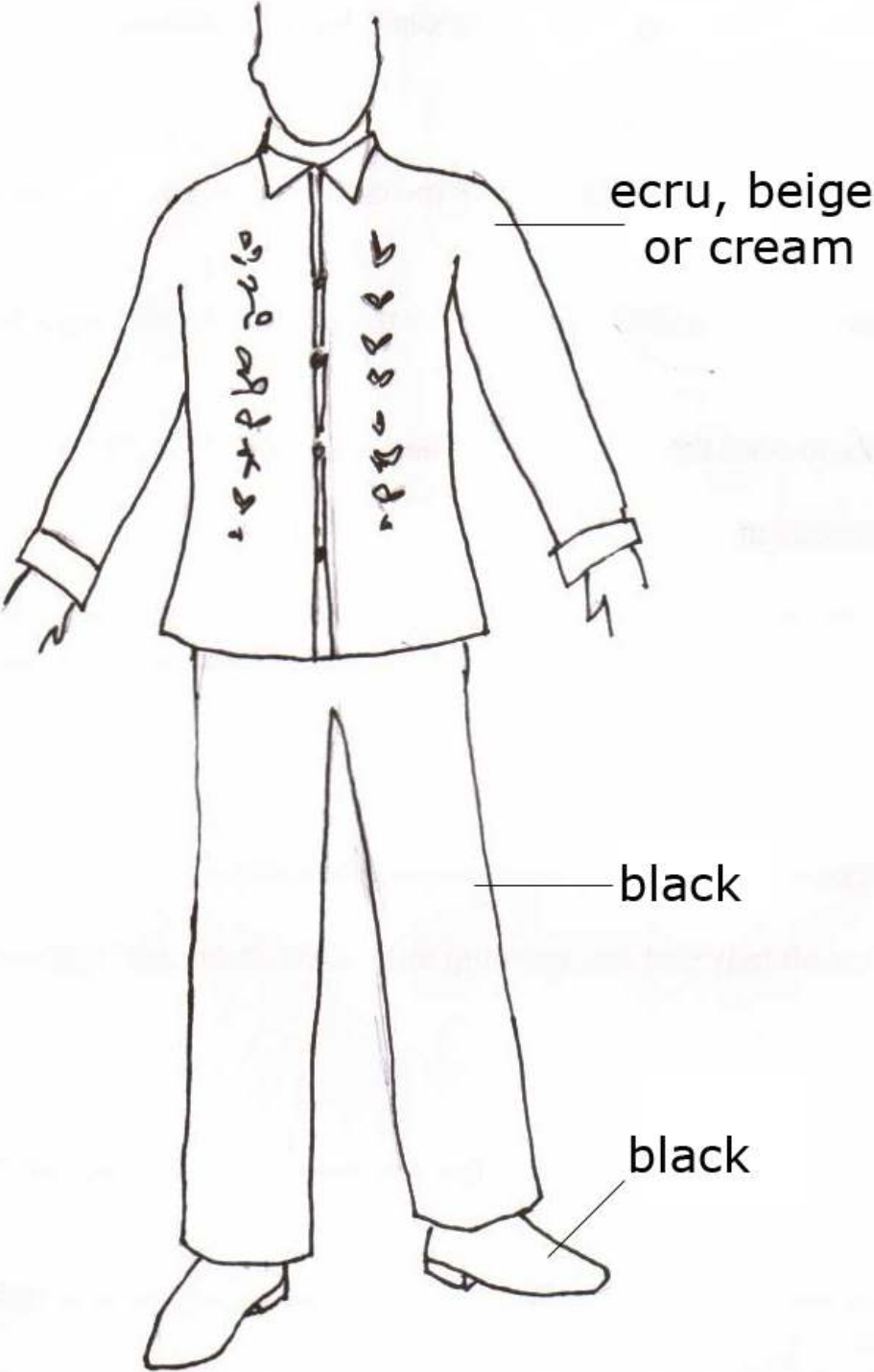


Appropriate Graduation Attire for MEN



Appropriate Graduation Attire for Ladies

(Off-white, beige or ecru colored dress)



with sleeves



mid-calf to ankle length

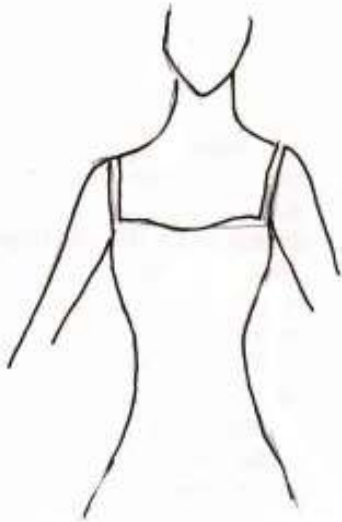


If the dress is sleeveless, spaghetti strap or strapless, please wear a bolero or shawl



closed ladies' shoes (any neutral color)

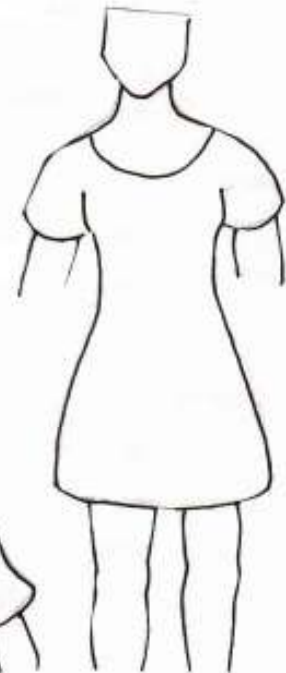
Inappropriate Graduation Attire for LADIES



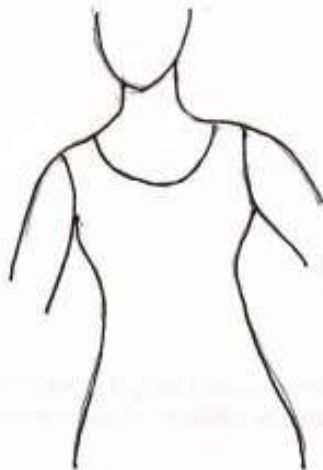
spaghetti



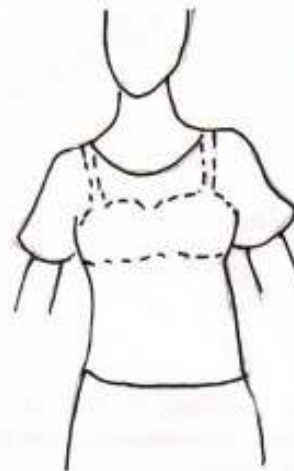
strapless



above the knee



sleeveless



see through / transparent



open shoes



sandal